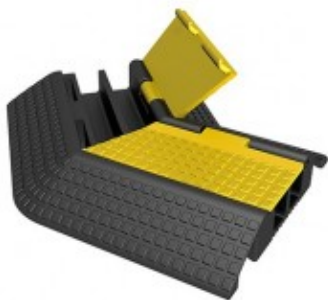


---

# 45 °BEND FOR CABLE FOOTBOARD ZZCP120. HIGH RESISTANCE POLYUTERAN



45 ° ANGLE FOR VEHICLE  
ACCESSIBLE CABLE TRAY  
ZZCP120

Reference: ZZCP120C45

## 45-Degree Angle for ZZCP120 Cable Ramp

A 45-degree curve for the ZZCP120 cable ramp series made of polyurethane and polyethylene with sloping edges that facilitate wheel crossing.

Dovetail modulation for connecting multiple modules in series, electrically insulating, fire-resistant, and corrosion-resistant.

### Technical Specifications

- 3-ton capacity
- 2 internal compartments of 30mm each
- Made of polyurethane and polyethylene
- Dimensions: 240 x 250mm
- Weight: 2.5Kg

**Do you want more information about our product?**

[Contact us now!](#)